

POTTER

The Symbol of Protection



POTTER
Integrated Voice Systems

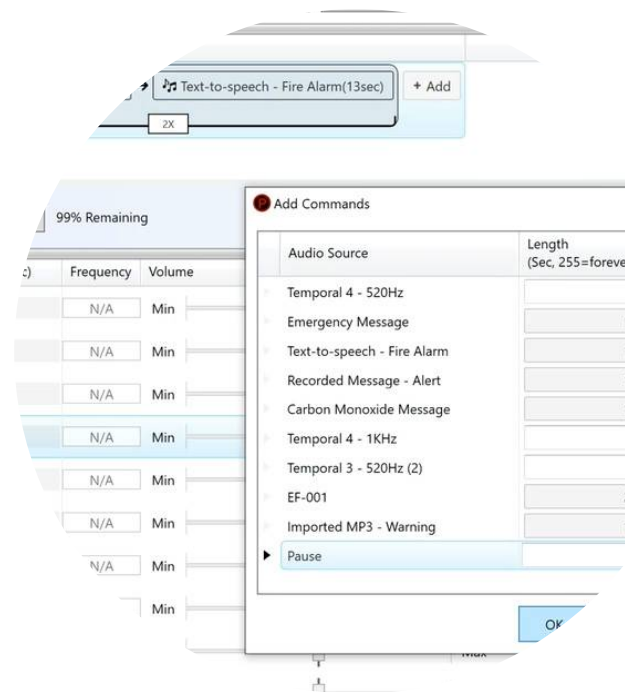


Unparalleled Software Features

Audio Patterns /

Audio patterns provide a user-friendly interface for creating, organizing, and editing audio messages. Users can click and drag audio sources onto a timeline allowing multiple, nested audio loops. Patterns can be played from within the software to test before uploading to the panel. Audio sources include predefined messages and tones, imported audio or tone files, text-to-speech, and audio recorded directly in the programmer.

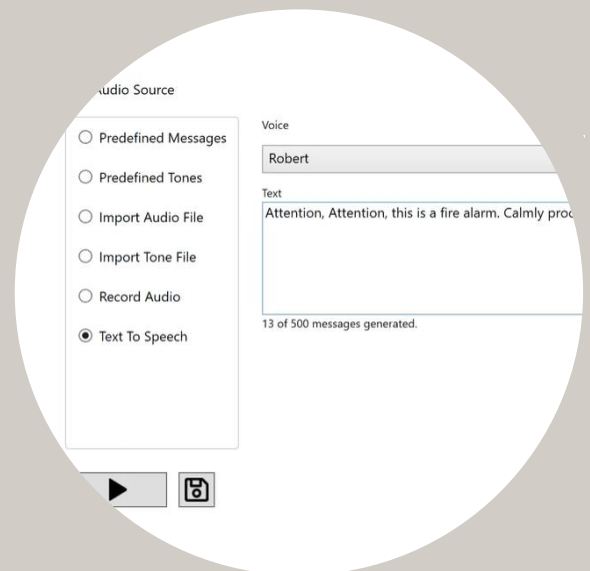
When changes to individual audio sources are required, patterns are automatically updated in real time, preventing outdated messages from being deployed. Additionally, users no longer need to know the sample rate of audio files, simplifying the import process.



Text-To-Speech /

Potter's exclusive text-to-speech feature allows in-software creation of spoken audio messages, avoiding the need for complicated 3rd party software or expensive voice artists. By utilizing the WaveNet neural network, our voice panels can generate speech that sounds more natural than other text-to-speech systems, producing human-like emphasis and inflection on syllables, sounds, and words.

Speech generation is created entirely within Potter's programming software with an easy, point-and-click interface. Multiple voices, genders, and accents can be selected allowing your system to match customer and locality preferences. Additionally, rate of speech can be selected providing fine-tuned intelligibility. Simply type your message and within seconds, it's ready to preview, save, and deploy.



Integrated Voice Panels



IPA-4000V /

- **IPA EXCLUSIVE** WaveNet Text-To-Speech audio messages
- Up to 31 amplifiers
- Industry leading 8 speaker circuits per amplifier for up to 248 total Class B or Class A circuits

Both platform options provide all these great features:

- 2 hours of message storage capacity
- Capacity for 255 custom audio patterns
- Up to 104 programmable push buttons for speaker zone and ECS assignment
- Auxiliary input to interface with external audio sources and background music installations
- Compatible with PotterNet software for alternative paging and MNS solutions
- UL 864 – Control Units and Accessories for Fire Alarm Systems
- UL 2572 – Mass Notification Systems
- UL 464 – Audible Signaling Devices and Low Frequency

Built on an industry-leading backbone /

By building on the familiar and powerful IPA and AFC series hardware, Potter's Integrated Voice platform delivers all your favorite features:

- Use state-of-the-art addressable sensors and control modules which utilize the robust PAD protocol to provide you the flexibility needed to tackle demanding applications
- From 1,270 to 4,064 addressable points, you can be sure that your fire system is ready to tackle jobs of any size and scope
- With industry leading IP technology, take advantage of Potter's multiple remote monitoring and control solutions as well as email notifications and reminders



Amplifiers

SCA /



- Single Channel
- 25W, 50W, and 100W models
- 25V or 70V Selectable models

DCA /



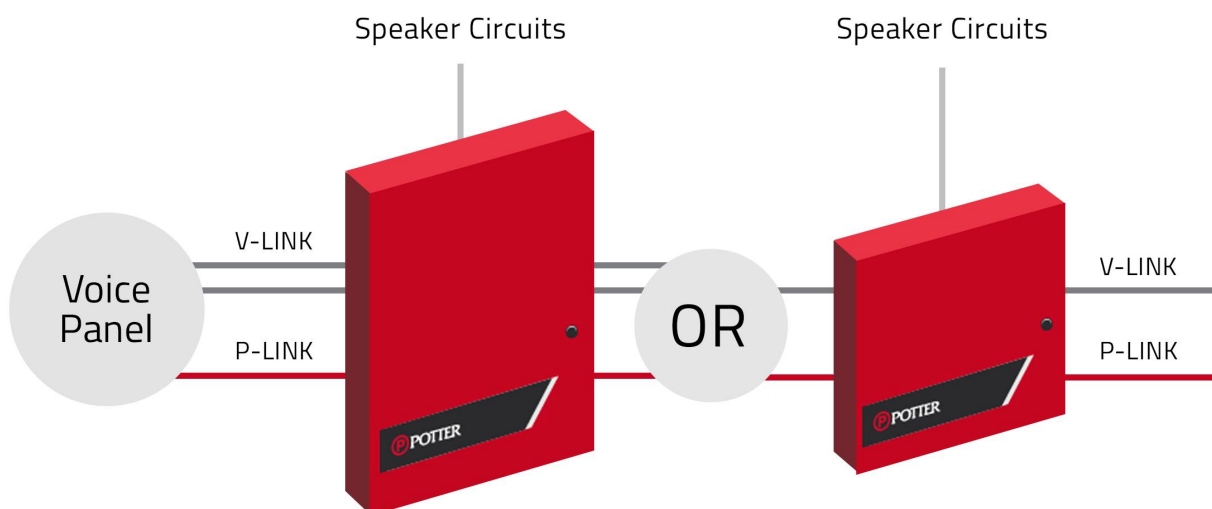
- Dual Channel
- 50W or 100W models
- 25V
- 70V capable with optional 70V-1000 converter
- Backup amplification using BUA-1000 module

Potter provides a large selection of single and dual channel amplifiers to support small, medium, and hi-rise applications. With available wattages up to 100W and support for both 25VRMS and 70VRMS output voltages, you can be sure that your integrated voice system can adapt to nearly any project. With up to 31 amplifiers per system and an industry leading 8 speaker circuits per amplifier, our systems are truly unmatched in size and capacity. Additionally, dual channel amplifiers can simultaneously instruct evacuation zones and alert other zones of potential emergency, saving the need for multiple amplifiers. The amplifiers receive data from the voice panel via the P-Link circuit. Low-level audio is delivered via one (single channel) or two (dual channel) V-Link circuits. All circuits have a maximum rated distance of 6500'.



BUA-1000 /

The BUA-1000 backup amplifier provides a failsafe solutions for potential lapse in service and is compatible with the DCA dual channel amplifiers.



Integrated Voice Accessories



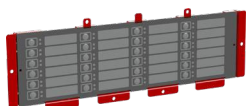
Local Operator Console /

Potter's LOC-1000 Local Operator Console is used to allow the system to be controlled from remote areas. The programming software allows a high, medium, and low prioritization scheme to gain control of the system. Up to 30 LOC-1000s can be added to a system, creating a robust remote interface for even the largest of installations.



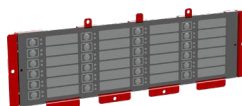
FFT-1000 /

The Potter's FFT-1000 Fire Fighter Telephone system provides a reliable method for responders to communicate over a fire fighter's handset from remote areas. The FFT-1000 comes in both left and right hinged orientations for convenient and accessible mounting next to the voice panel. When used with Potter Integrated Voice Systems, the unit can operate as a P-Link device, utilizing a 4-terminal power and data connection with a maximum run of 6,500 feet. Alternatively, it can act as a standalone device for use in any voice system. With up to 96 Class B or Class A phone circuits, the FFT-1000 allows responders to answer up to 5 phones at one time.



SB-24 /

The SB-24 provides 24 programmable push buttons for speaker zone and ECS message assignment. Each button has two corresponding status LEDs to indicate activity and trouble conditions. The SB-24 is equipped with a bracket for secure mounting. A maximum of four (4) SB-24's may be installed on the IPA-4000V and LOC-1000.



FSB-24 /

The FSB-24 switch board provides 24 programmable push buttons for phone circuit assignment. Each button has two corresponding LEDs to indicate activity and trouble conditions. The FSB-24 is equipped with a bracket for secure mounting. A maximum of 4 FSB-24's can be installed within an FFT-1000R and FFT-1000L.



FFT-EXP /

The FFT-EXP is an expander module that provides 12 Class B or 6 Class A phone circuits. The expander module connects to the FFT-1000 through the F-Link and Voice terminals and is expandable up to 6 devices for Class B systems and up to fourteen (14) for Class A systems. A maximum of 2 FFT-EXP's can be mounted in the FFT-1000. Additional FFT-EXP's may be mounted in the AE-8 and AE-14 remote cabinets. All FFT-EXP's must be installed in the same room within 20 feet of the FFT-1000 and wiring must run in conduit.



70V-1000 /

The 70V-1000 is connected to the DCA-5025 and DCA-10025 using an 8 pin ribbon cable. The connection is supervised, and power limited. The 70V-1000 must be mounted in the DCA enclosure. The module is equipped with a bracket for secure and accessible mounting.





At Potter Electric Signal Company,

QUALITY is the first order of business. Since 1898, we have served the fire and security industries on a worldwide basis. Today, we produce a wide array of products including the most innovative IP-based fire alarm control systems, integrated voice systems, and monitoring devices. At Potter, we supply our customers with products that provide real world solutions for their unique needs and strive to provide them unequaled service and technical support.

Authorised Distributor



PT. TRINITAS VICTORI PYROGEN NUSANTARA

Komplek Duta Harapan Indah Blok OO 53
Jl. Kapuk Muara Penjaringan Jakarta Utara
14460 DKI Jakarta Indonesia
Tel. +62 21 26080740 ; +62 21 6682815
Email. info@tvpn.co.id - www.tvpn.id

